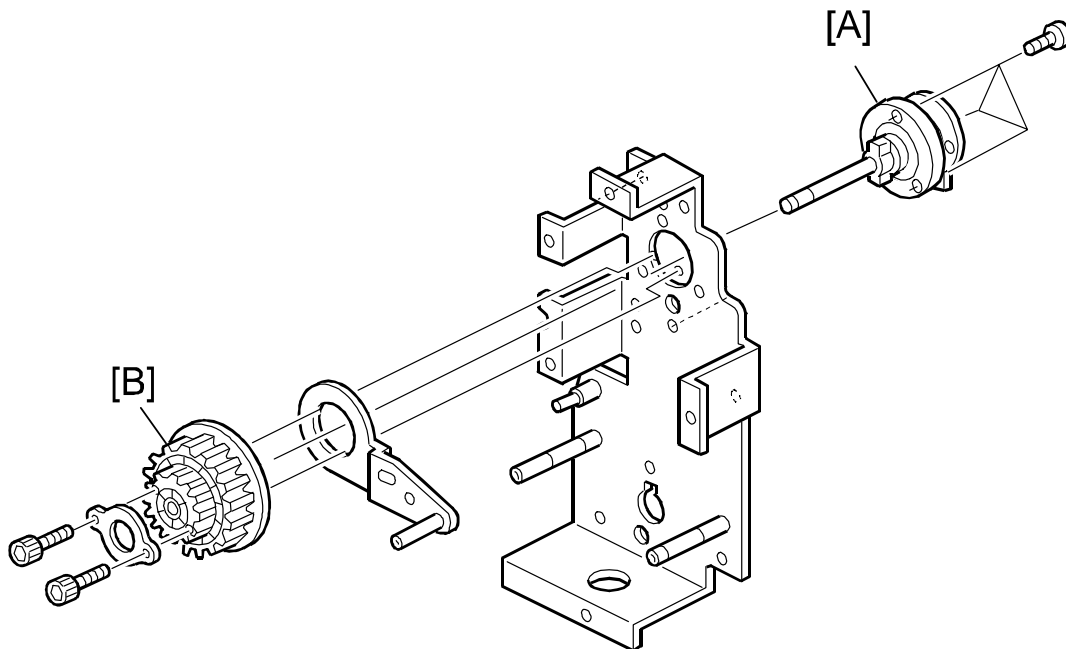


<b>Model:</b> PRIPORT RUBY	<b>Date:</b> 10-May-04	<b>No:</b> M-C232-001
<b>Modified Article:</b> Parts catalog correction for Drum Drive Shaft	<b>Prepared by:</b>	
<b>From:</b> Priport Service Planning Section	K. Yamamoto	
<b>Classification:</b>	<input checked="" type="checkbox"/> Parts catalog correction <input type="checkbox"/> Vendor change <input type="checkbox"/> To meet standards <input type="checkbox"/> To facilitate assembly <input type="checkbox"/> To improve reliability    (    ) <input type="checkbox"/> Part standardization <input type="checkbox"/> Other (    )	
<b>Model Name:</b>		
Ricoh JP5800		

The shape of drum drive shaft [A] and timing pulley – drum drive [B] were changed to prevent wear to the drum drive shaft.

Old part number	New part number	Description	Q'ty	Int	Page	Index
C2291090	C2331090	Drum Drive Shaft	1	X/O as a set	23	12
C2291092	C2331092	Timing Pulley - Drum Drive	1		25	12

Note: Replace the Drum Drive Shaft and the Timing Pulley together as a set.



**Model:** PRIPORT RUBY**Date:** 10-May-04**No:** M-C232-001**CUT IN SERIAL NUMBERS**

<b>Model Name</b>	<b>V/Hz</b>	<b>Destination</b>	<b>Code</b>	<b>Serial Number</b>
Ricoh JP5800	230/50	Europe, etc.	C232-27	C3711100001~

<b>Model:</b> PRIPORT RUBY		<b>Date:</b> 12-Oct-04	<b>No:</b> M-C232-002
<b>Modified Article:</b> Paper Guide		<b>Prepared by:</b>	
<b>From:</b> Priport Service Planning Section		A. Yoshida	
<b>Classification:</b> <input type="checkbox"/> Parts catalog correction <input type="checkbox"/> Vendor change <input type="checkbox"/> To meet standards <input type="checkbox"/> To facilitate assembly <input checked="" type="checkbox"/> To improve reliability         ( ) <input type="checkbox"/> Part standardization <input type="checkbox"/> Other ( )			
<b>Model Name:</b>			
Ricoh JP5800			

The following applies to the optional JS40-Sorter.

Old #	New #	Description	Qty	Int	Page	Index
-	C5922370	Front Guide Assembly	1	X/O as a set	21	*24
-	C5922371	Rear Guide Assembly	1		21	*25
-	04514006B	Tapping Screw – 4x6	2		21	101
-	C5922374	Guide	2	-	21	*26

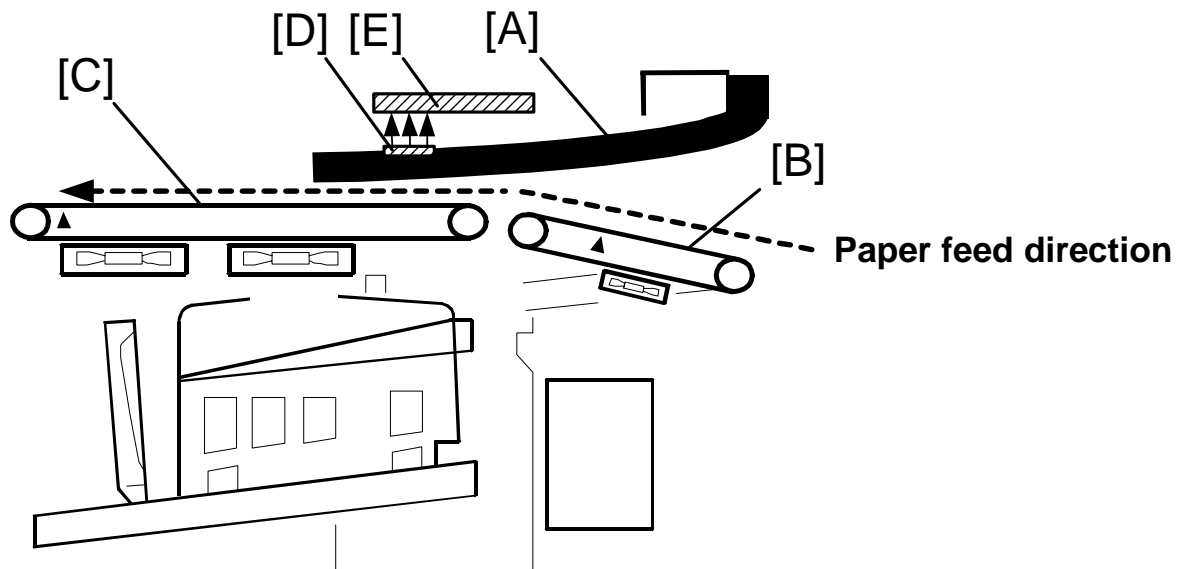
\*: New index

**NOTE:** The #C5922374 guide is part of the front guide assembly and rear guide assembly.

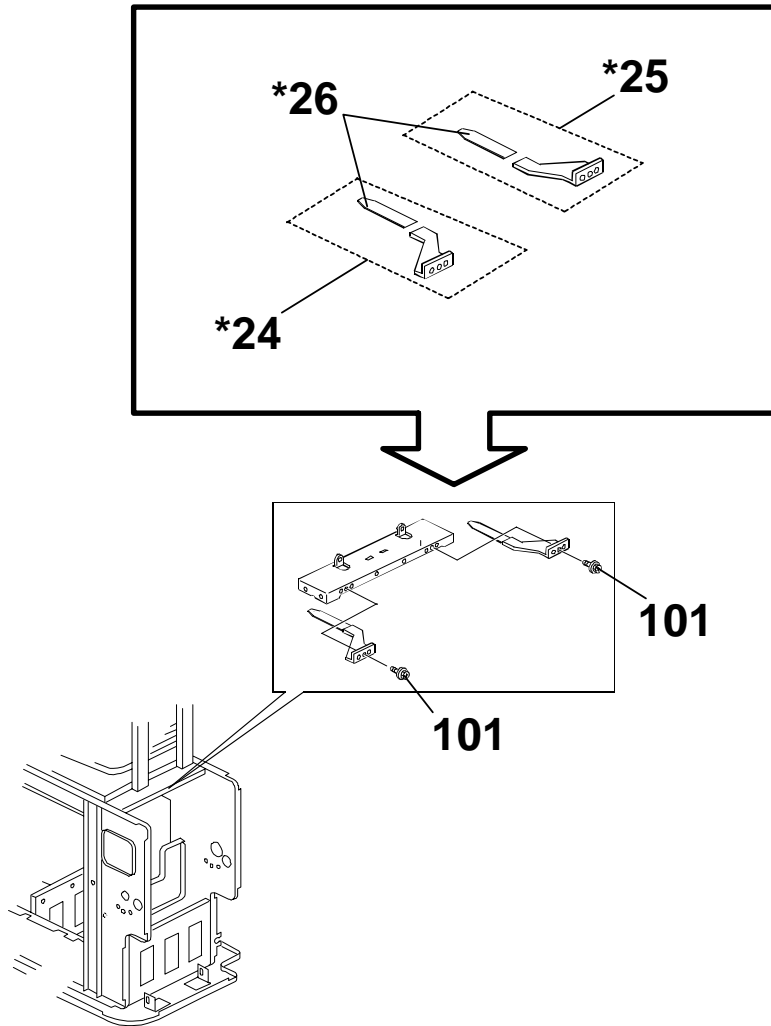
**Change:** Added front guide assembly [A], rear guide assembly.

**Reason:** To ensure that curled paper is fed smoothly in the relay transport area [B] and horizontal transport area [C].

**Important:** When images with many solid image areas are printed out often, light scratches can appear on the copy. For these customers, attach a piece of double-sided tape [D] to the guide assembly, and then attach the guide assembly to the upper stay [E].



Revised Illustration:



**CUT IN SERIAL NUMBERS**

Model Name	V/Hz	Destination	Code	Serial Number
JS40-Sorter	230/50	Europe	C592-53	C3881080001

<b>Model:</b> PRIPORT RUBY	<b>Date:</b> 3-Dec-04	<b>No:</b> M-C232-003
<b>Modified Article:</b> Belt drive motor	<b>Prepared by:</b>	
<b>From:</b> Priport Service Planning Section	M. Kanomata	
<b>Classification:</b>	<input type="checkbox"/> Parts catalog correction <input type="checkbox"/> Vendor change <input type="checkbox"/> To meet standards <input type="checkbox"/> To facilitate assembly <input checked="" type="checkbox"/> To improve reliability    (    ) <input type="checkbox"/> Part standardization <input type="checkbox"/> Other (    )	
<b>Model Name:</b>		
Ricoh JP5600		

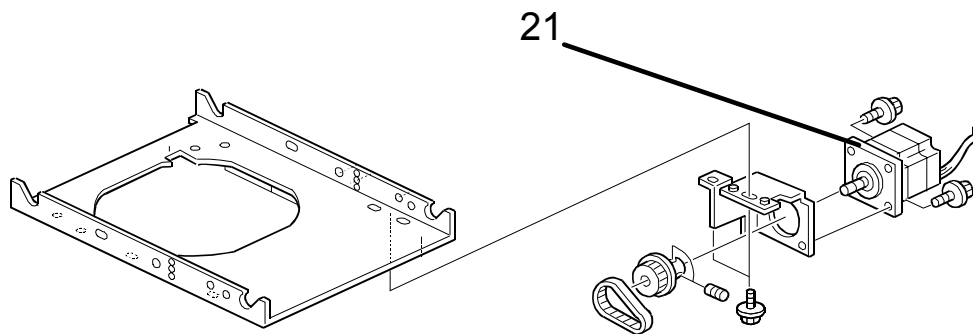
This MB applies to the optional **JS40-Sorter**.

Old #	New #	Description	Qty	Int	Page	Index
C5925868	C5925869	BELT DRIVE MOTOR	1	X/O	7	21

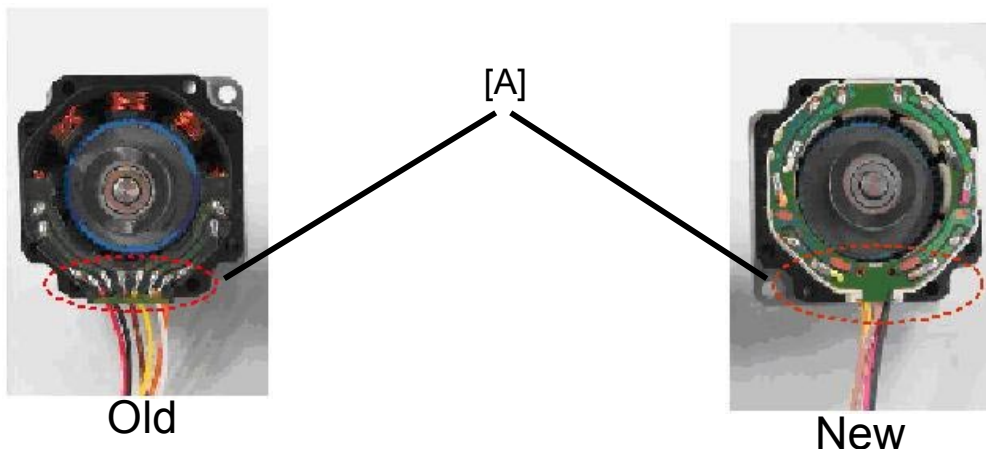
**Change:** The internal connection of the harness and motor was changed.

**Reason:** To ensure that the harness stays connected to the motor. This will ensure that a jam at the relay transport unit does not occur.

**Illustrations:**



[A]: Internal connection point of the harness.



**Model:** PRIPORT RUBY**Date:** 3-Dec-04**No:** M-C232-003**CUT IN SERIAL NUMBERS**

<b>Model Name</b>	<b>V/Hz</b>	<b>Destination</b>	<b>Code</b>	<b>Serial Number</b>
JS-40 Sorter	230/50	Europe	C592-53	C3384090001

<b>Model:</b> PRIPORT RUBY		<b>Date:</b> 24-Jan-05	<b>No:</b> M-C232-004
<b>Modified Article:</b> Modified to environmentally-friendly material		<b>Prepared by:</b>	
<b>From:</b> Priport Service Planning Section		K. Yamamoto	
<b>Classification:</b> <input type="checkbox"/> Parts catalog correction <input type="checkbox"/> Vendor change <input type="checkbox"/> To meet standards <input type="checkbox"/> To facilitate assembly <input type="checkbox"/> To improve reliability                   (     ) <input type="checkbox"/> Part standardization <input checked="" type="checkbox"/> Other (     )			
<b>Model Name:</b>			
Ricoh JP5800			

**Change:** The materials of these parts were changed to more environmentally-friendly materials.

**Reason:** As part of Ricoh's ongoing application of in-house environmental management standards.

Ruby

Old Part Number	New Part Number	Description	Q'ty	Int	Page	Index
C2292850	C2442850	Paper Feed Stay	1	O/O	33	22
C2295732	C2445734	Feed Pressure Motor Bracket	1	O/O	33	14
C2292893	C2442893	Right Pressure Arm	1	O/O	37	12
C2292894	C2442894	Left Pressure Arm	1	O/O	37	10
C2292898	C2442898	Pressure Release Lock Arm - Right	1	O/O	37	13
C2292899	C2442899	Pressure Release Lock Arm - Left	1	O/O	37	9
C2292900	C2442900	Pressure Release Shaft	1	O/O	37	11
C2295730	C2445730	Paper Table Motor Bracket	1	O/O	31	30
C2292751	C2442751	Right Side Plate	1	O/O	31	10
C2292755	C2442755	Lift Up Rack - Paper Table	1	O/O	31	1
C2292754	C2442754	Left Side Plate	1	O/O	31	6
56073927	C2442799	Stepped Screw - M3x8	2	O/O	31	17
C2322767	C2362767	Paper Tray Unit	1	O/O	29	26
C2322779	C2582779	Sheet Harness Clamp	1	O/O	29	29
C2322773	C2362773	Paper Tray	1	O/O	29	14
C2292955	C2442955	Ground Plate	1	O/O	29	15
C2322774	C2362774	Paper Tray Cover	1	O/O	29	3
C2322775	C2362775	Paper Tray - Sub	1	O/O	29	12
C2322861	C2452861	Pulley Cover	1	O/O	27	24